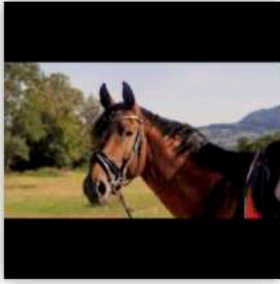
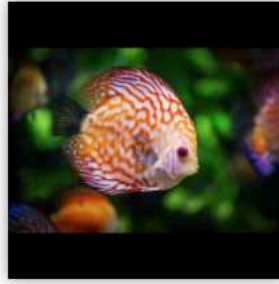


Measure Words: Animals



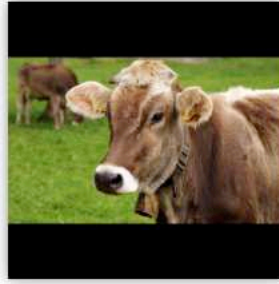
匹
pǐ

Horses.



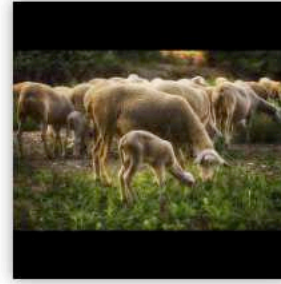
条 / 條
tiáo

Fish and snakes.



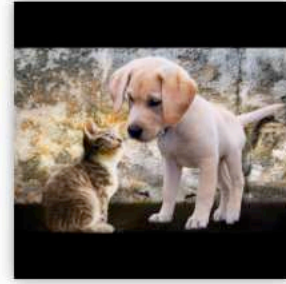
头 / 頭
tóu

Livestock and domesticated animals (such as cows, mules, pigs, etc.)



群
qún

Used for groups of animals (such as a herd of sheep, a flock of birds, swarm of bees, etc.)



只 / 隻
zhī

Used for animals (such as dogs, cats, birds, elephants, etc.)